

Control systems - HeatMax™ dial

The HeatMax™ rotary dial control system offers users a simple, easy-to-use user interface, providing individual accurate room temperature control.

The rotary dial system is simple to install, commission and operate. When installed in separate rooms or zones, the HeatMax™ rotary dial room thermostats allow the appropriate temperature to be set for each space. This ensures both comfort and system efficiency.

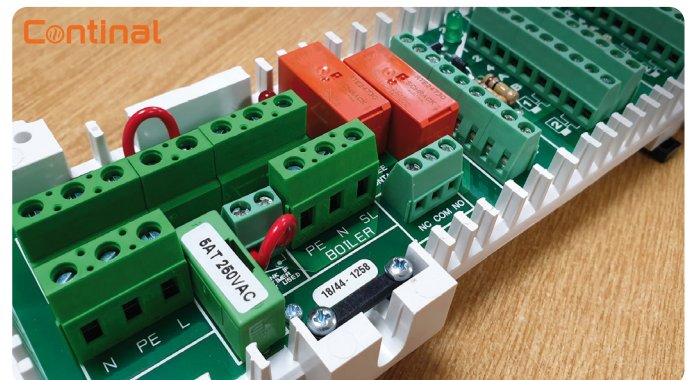
Each thermostat controls the flow of water to each control zone via the system's HeatMax™ wiring centre, through low energy actuators positioned on the manifold. The wiring centre also provides switching to the boiler and underfloor heating pump, ensuring the system's demands are automatically communicated with the heat source.

Key system characteristics:

- Simple user interface and wiring
- Accurate temperature control of each zone
- Simple connectivity of all wiring via the wiring centre
- Boiler and pump switching with boiler interlock
- Low energy actuation on each circuit
- Low-cost option

Key components:

- HeatMax™ rotary dial thermostat
- HeatMax™ wiring centre and extension units
- HeatMax™ zone actuators



HeatMax™ wiring centre



HeatMax™ zone actuators



About us

No ifs, no buts. The award-winning Continal® service means you get an underfloor heating system delivered to you on time, on site, every time, no compromise.