

# Quantum dial thermostat-RF



Our unique Quantum dial thermostat-RF is the only dial thermostat that can be operated remotely via an easy-to-use app or through its simple interface.

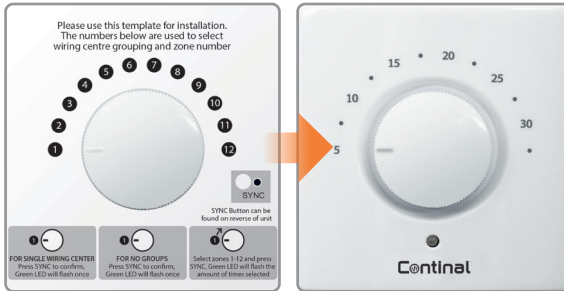
Users appreciate its silent switching and clear LED indicator, while its self-learning feature requires minimal intervention.

## Contents

1. Overlay information
2. LED indication
3. Installation
4. Linking
5. Identify (online)
6. Identify (offline)
7. Factory reset
8. Product compliance and safety information

## 1. Overlay information

**For reference only.** The image on the left explains the correlation between the temperature scale and the pairing scale. To be used for the initial set-up or in case of lost link error. Please keep the sticker on until installation is complete.



## 2. LED indication

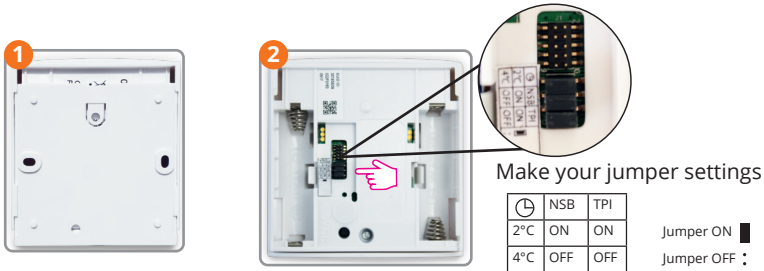
LED	Meaning
<b>Before pairing</b>	
	Wanting to join network
	Joined the network successfully
	*Pairing complete
	Wiring centre number selection OK
	Wiring centre group selection OK
	Wiring centre zone selection OK
	Identify process ON

\* Only in offline mode

**Note:** When thermostat is calling for heat, the LED will be OFF. If you encounter the lost link error, repeat the pairing procedure.

LED	Meaning
<b>Error codes</b>	
	Lost connection with Quantum coordinator / Quantum wiring centre-RF / Quantum hub
	Quantum dial thermostat-RF has been reset
	Low battery
	Air sensor is too short or open
	Pairing failed
	Error when trying to add two Quantum dial thermostat-RF to the same wiring centre zone
	- Device reset; - After pairing in online mode: data being sent to the cloud

### 3. Installation



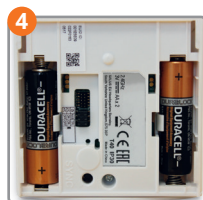
Jumper	Feature	Default
PI*/SPAN	TPI (jumper ON) or Span 0.5°C (remove jumper)	TPI ON
NSB**	Night Setback ON (jumper ON) or OFF (remove jumper)	ON
Setback value	-2°C (jumper ON) or -4°C (remove jumper)	-2°C for heating

\*TPI will determine the pattern of your heating periods and will adjust it so that the temperature point will be maintained longer.

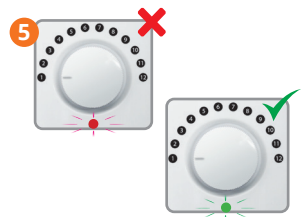
\*\*NSB will only operate if there is a master thermostat set on the wiring centre. If there is no master set, there's no need to remove the jumper.



Make sure that the thermostat dial is set in position 1.



Insert the batteries.

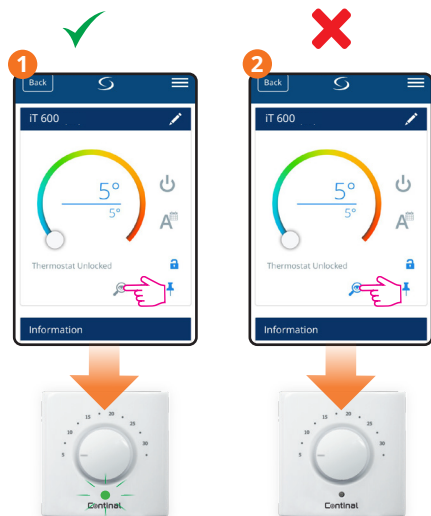


If the Quantum dial thermostat-RF flashes green, but you need to re-pair it, read the Reset section.

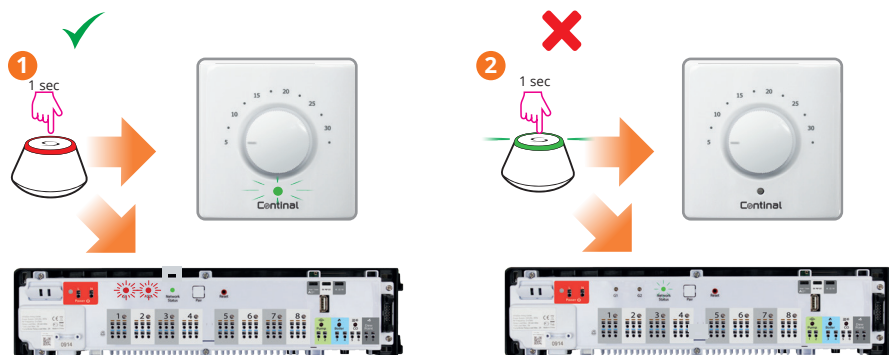
## 4. Linking

Refer to the linking quick guides for instructions on how to link the Quantum wiring centre-RF. This can be found at [www.continal.eu/quantum](http://www.continal.eu/quantum)

## 5. Identify (online)



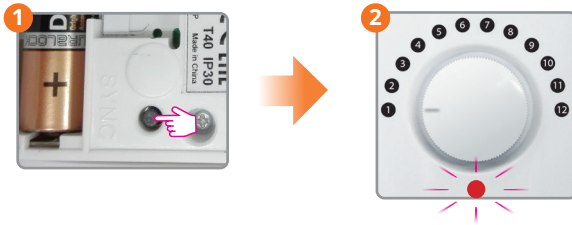
## 6. Identify (offline)



## 7. Factory reset

If a factory reset is required, each Quantum thermostat will need to be factory reset separately to the Quantum wiring centre.

### Quantum dial thermostat-RF



Press the reset button for 5 seconds, then the thermostat will completely reset and remove itself from the ZigBee network.

## 8. Product compliance and safety information

### Product compliance

This product complies with the essential requirements and other relevant provisions of Directives 2014/53/EU and 2011/65/EU.

 2405MHz-2480MHz; <14dBm (ZigBee)

### Safety information

Use in accordance with the regulations. Indoor use only. Keep your device completely dry. Disconnect your device before cleaning it with a dry cloth.

Note: Always isolate the AC mains supply before installing or working on any components that require 230 VAC supply.

## Want more information?

01 531 4493

[www.continal.ie](http://www.continal.ie)