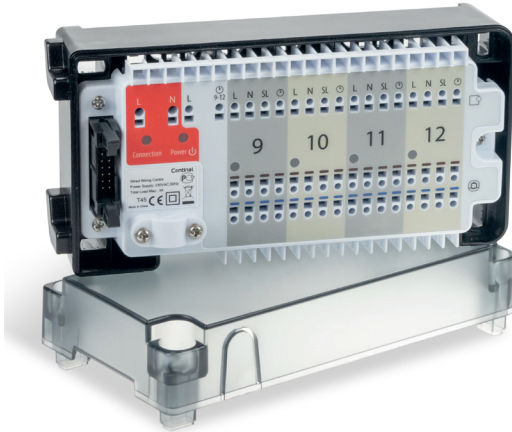


Quantum wiring extension



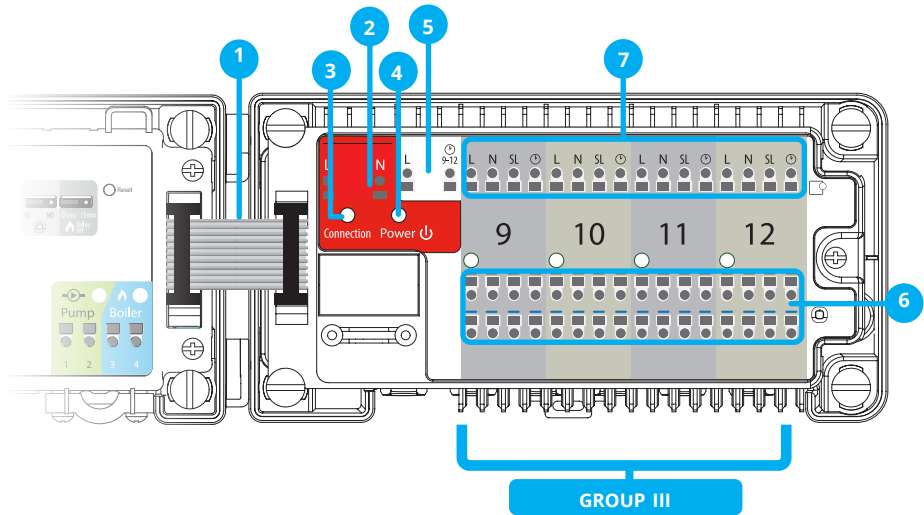
Simple to operate and easy to install, our Quantum wiring extension increases the capabilities of your Quantum wiring centre.

This plug-in unit allows you to attach up to 4 more thermostats using simple push-in connectors. Super-clear LED indicators keep you in the picture.

Contents

1. Wiring centre description
2. Serial connector
3. Power supply
4. LED indicators
5. Night set back
6. Actuator connection
7. Thermostat connection
8. Installation
9. Product compliance and safety information

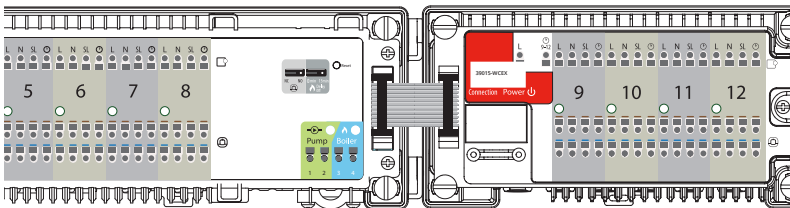
1. Wiring centre description



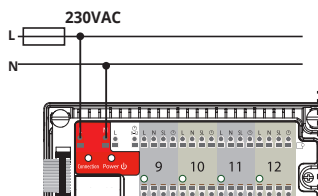
- | | |
|-------------------------|---------------------------|
| 1. Serial connector | 5. NSB function terminals |
| 2. Power supply | 6. Actuator connection |
| 3. Connection indicator | 7. Thermostat connection |
| 4. Power indicator | |

2. Serial connector

The serial connector is used to connect the Quantum wiring centre with the Quantum wiring extension to add functionality and support up to 12 zones.



3. Power supply



Power supply for wiring centre is 230VAC.
Two-wire installation should be made in accordance with the applicable regulations.

4. LED Indicators

Connection indicator



After the successful connection of the Quantum wiring centre with Quantum wiring extension, the extension module LED will light up red constantly.

Power indicator

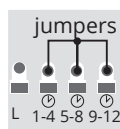


After connection of the Quantum wiring extension to the power supply, the red power LED will light up.

5. Night set back

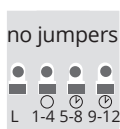
NSB function is activated in non-programmable Continal thermostats via an external signal. NSB 230VAC signal (night-time temperature reduction) is sent via an external timer or programmable thermostat connected to the wiring centre. Non-programmable thermostats receive NSB signal and reduce setpoint temperature (by switching to eco mode). All thermostats have to be connected using a 4-wire cable (min. 4 x 0.75mm², max. 4 x 1.5mm²).

• OPTION 1



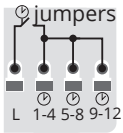
One Master thermostat that is common for thermostats from Group 1, Group 2 and Group 3 (one programmable thermostat other thermostats are non-programmable).

• OPTION 2



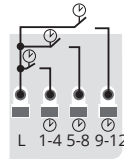
Three Master thermostats. One for Group 1, one for Group 2 and one for Group 3 (three programmable thermostats, other thermostats are non-programmable).

• OPTION 3



One external clock that is common for thermostats from Group 1, Group 2 and Group 3 (one external clock + daily regulators).

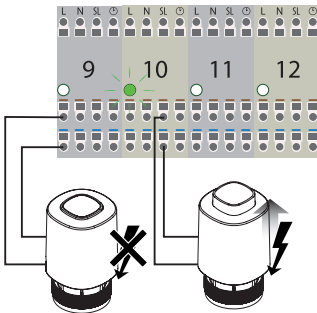
• OPTION 4



Three external clocks. One for Group 1, one for Group 2 and one for Group 3 (three external clocks + non-programmable regulators).

Note: Terminals 1-4 and 5-8 are located in the Quantum wiring centre, while terminals 9-12 are located in the Quantum wiring extension module.

6. Actuator connection

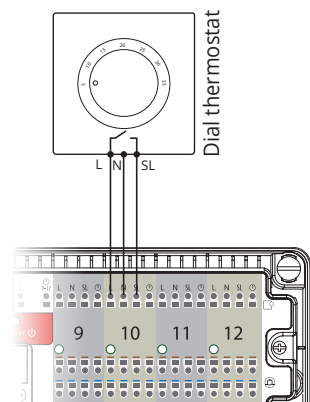
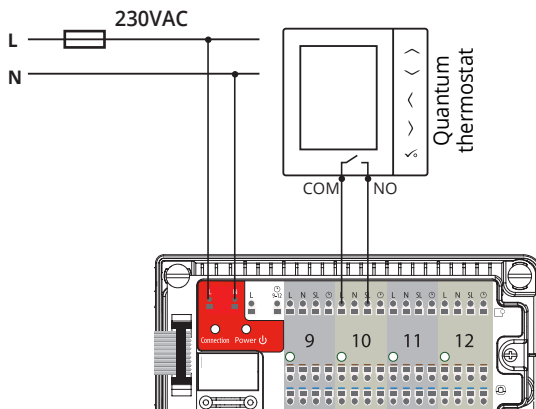


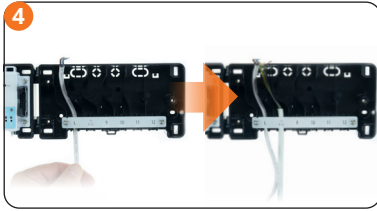
The actuator wires should be secured with the self-locking connectors in the appropriate zone. Up to 6 actuators with a load of up to 2 watts each can be connected to a single zone. If you need more than 6 actuators in a single zone, use an additional relay to relieve the output.

Note: 230VAC voltage when actuators are live.

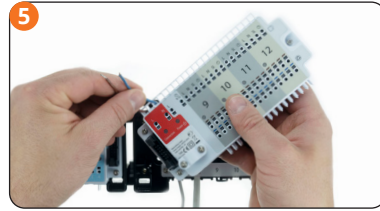
7. Thermostat connection

Connecting a 230VAC thermostat

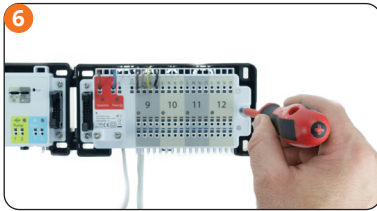




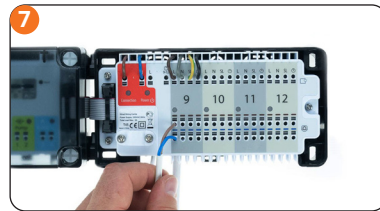
Thread the wires under the mounting belt in the back part of the wiring centre extension.



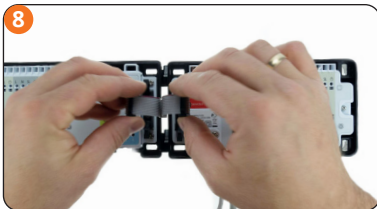
Thread the wires through the slots in the top part of the wiring centre extension and connect it to the terminals.



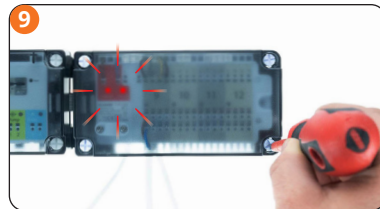
Adjust the wires and screw the main housing of the wiring centre extension to the rear housing.



Connect the actuator's wires.



Connect the serial cable to the Quantum wiring centre and the Quantum wiring extension connector.



Make sure that all wires are properly connected, then mount the top cover and power up the wiring centre and wiring centre extension. "Power" and "Connection" red LED will light up indicating the correct connection with the Quantum wiring centre.

9. Product compliance and safety information

Product compliance

This product complies with the essential requirements and other relevant provisions of the following EU Directives: EMC 2014/30/EU, Low Voltage Directive LVD 2014/35/EU and RoHS directive 2011/65/EU.

Safety information

Use in accordance with national and EU regulations. Device is intended for indoor use only in dry conditions. Installation must be carried out by a qualified person in accordance with national and EU regulations.

Before attempting to setup and install, make sure that the devices are not connected to any power source. Installation must be carried out by a qualified person. Incorrect installation may cause damage to the devices. The Quantum wiring extension should not be installed in areas where it may be exposed to water or damp conditions.

Want more information?

0937 371 045

www.continal.es