

Quantum hub



Control your heating from anywhere with our Quantum hub.

This easy-to-connect hub links all your Quantum products to the Smart Home app, enabling you to manage your heating via your smartphone or tablet.

Unlike some connected home systems, the Quantum hub is the only device that needs to be connected to the internet, making it quick and easy to setup.

Contents

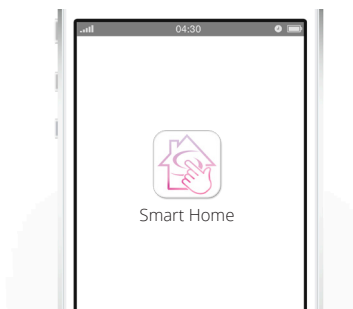
1. Initial setup
2. Optional: connect your Quantum hub to WiFi
3. Product compliance and safety

1. Initial setup

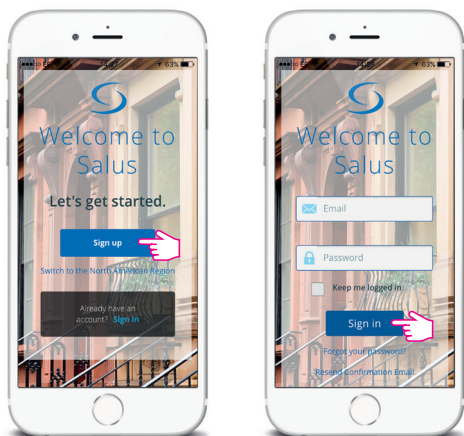
1 Power up



2 Download the Smart Home app




- 3 Sign up, create an account and confirm it. After that, please sign in.



- 4 Follow the on-screen instructions



- 5 Success! You have connected your Quantum hub.
Press  to go to the dashboard.



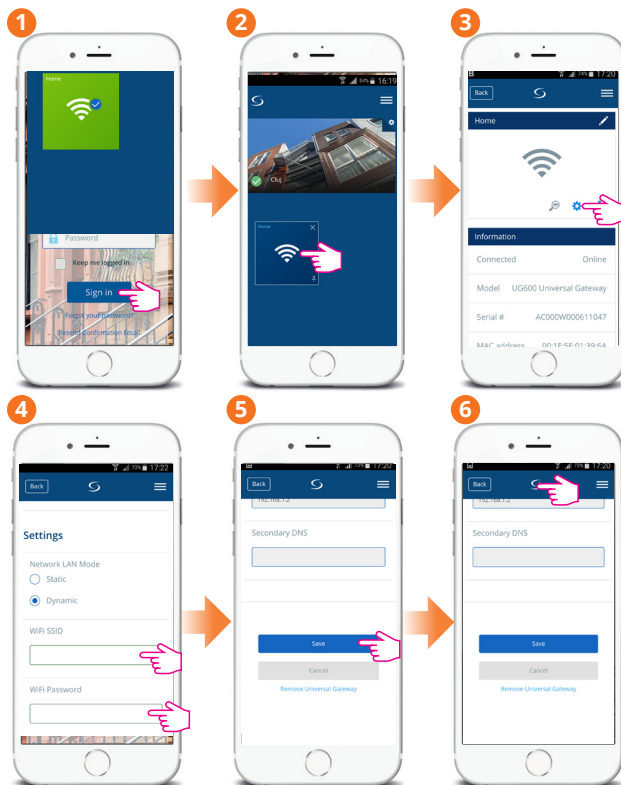
2. Optional: connect your Quantum hub to WiFi

First add the Quantum hub on the App by using the ethernet cable. Then use the app to connect the Quantum hub to the WiFi, then remove the ethernet cable.

WiFi SSID = The name of your network

WiFi Password = The password of your network

(Both case sensitive)



Wait 2 min and then remove the ethernet cable from the Quantum hub.



3. Product compliance and safety

Product compliance

This product complies with the essential requirements and other relevant provisions of Directives 2014/30/ EU, 2014/35/EU, 2014/53/EU and 2011/65/EU.

Safety information

Use in accordance with the regulations. Indoor use only. Keep your device completely dry. Disconnect your device before cleaning it with a dry cloth.

Note: Always isolate the AC mains supply before installing or working on any components that require 230 VAC supply.

Want more information?

022 508 38 82

www.continal.ch