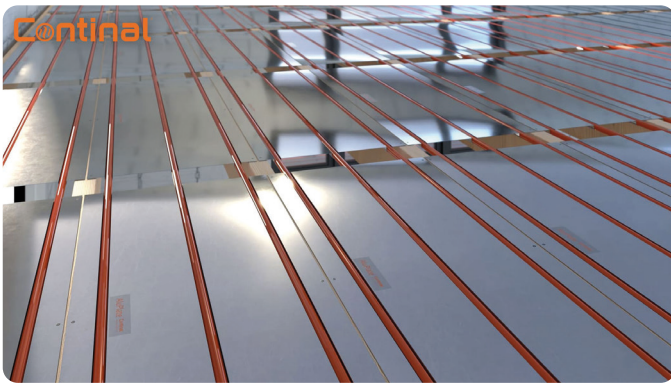


Product datasheet

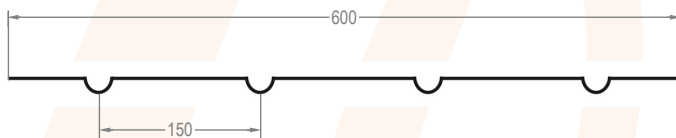
AluPlate™ fit-from-above

AluPlate™ is an engineered aluminium panel with grooves, to securely clip pipe, to maximise heat transfer. It is typically installed in suspended joisted floors, on battens for sprung floors, or cradle and batten acoustic floors.

Available in 100mm or 150mm centres for low temperature systems, and 200mm centres for high temperature systems.

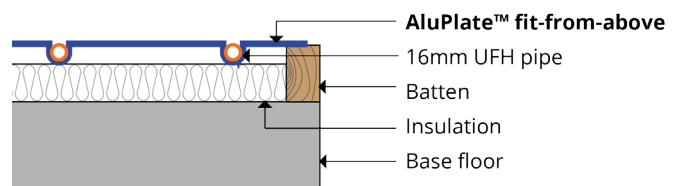
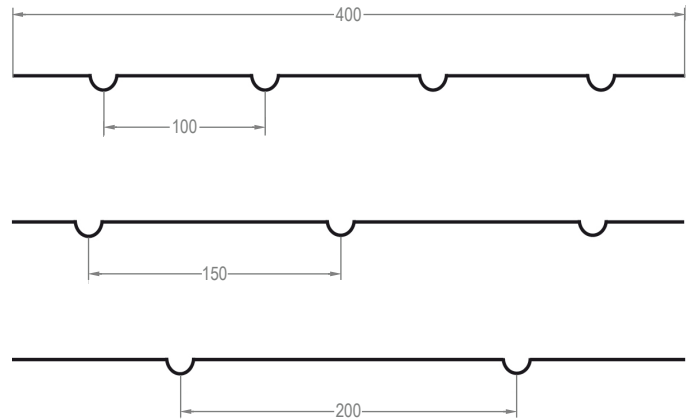


	AluPlate™-FFA-400	AluPlate™-FFA-600
Width (mm)	400	600
Length (mm)	1000	1000
Thickness (mm)	0.6	0.6
Pipe centres (mm)	100, 150, 200	150
Pipe channels (mm)	16	16
Weight (kg)	0.5	0.7
Optional QuikSnap™	Yes	Yes



Features:

- AluPlate™ diffuses heat evenly across the floor
- Used between battens "over joist" with a small increase in floor height or "between joist" with no change in floor height
- Available in different sizes and various pipe spacings to allow for flexibility of joist centres and flow temperature
- Suitable for underneath wood floors
- Easy to install
- QuikSnap™ allows plate size to be easily reduced



About us

No ifs, no buts. The award-winning Continal® service means you get an underfloor heating system delivered to you on time, on site, every time, no compromise.

